

## Porte, Excelencia Logística

# Ensuring the Integrity of Refrigerated Transportation Supplies for Self-Service Chains



### Logistical excellence in every load

Porte® is a company with extensive experience in logistics and heavy cargo transportation in dry box and refrigerated box trailers, providing supply services for self-service chains.

The company based in the city of Celaya, Guanajuato, Mexico provides its logistics services with its focus on creating global connections for local companies, supporting the supply chain to guarantee quality and trustworthy products and services for end consumers.



## The Challenge

### Operational challenges and strategic needs

Porte® takes on the challenging commitment to raise the standards of safety and excellence, with the aim of optimizing efficiency and ensuring integrity in all its operations. This challenge is essential to maintain and reinforce its leadership position in the transportation industry.

### Key actions in this challenge include:

- 1. Improving Fuel Performance:** By tracking and monitoring loads and consumption, we seek to optimize the use of essential resources.
- 2. Preventive and Corrective Maintenance:** We implement a rigorous system for scheduling and monitoring maintenance to ensure the optimal operating status of our fleet.





- 3. Cold Chain Monitoring:** It is crucial to guarantee the integrity of refrigerated cargo, for which the temperature is continuously controlled and the opening of doors is monitored.
- 4. Advanced Fleet Management:** Through monitoring technology, we improve visibility and fleet management, reinforcing operational safety.
- 5. Operator Training and Monitoring:** We use advanced driving analysis tools to train and provide effective feedback to operators, ensuring professionalism
- 6. Event and Accident Analysis:** We establish mechanisms to collect evidence that reinforces risk prevention and promotes good practices in our operations.



## The Solution

### Development, integration and implementation of technology

In response to our client's specific challenges, Didcom designed and implemented a specialized telematics solution that has radically transformed the operation of their fleet. This bespoke technology integration has allowed Porte® to extend the visibility and control of their operation to create global quality connections to businesses in the local environment, empowering every vehicle on the road with technologies to ensure quality and confidence in every travel and delivery.

+ **Temperature monitoring:**

Effective implementation of temperature sensors to protect and ensure the integrity of refrigerated loads.

+ **Operational and preventive control:**

Integration of door opening sensors to monitor the operation and support predetermined actions.

+ **Proactive maintenance:**

Integration of solutions focused on monitoring and scheduling maintenance to ensure the optimal condition of vehicles.

+ **Fuel efficiency:**

Monitoring and analysis of loads and consumption to identify habits, deficiencies and opportunities for improvement in resource consumption.

+ **Operator identification:**

Technological equipment to monitor and support compliance in the assignment of operators and their performance.

+ **Operational visibility:** Installation of dashboard cameras in the cabin to provide context to the operation and provide video evidence in the event of accidents and eventualities.

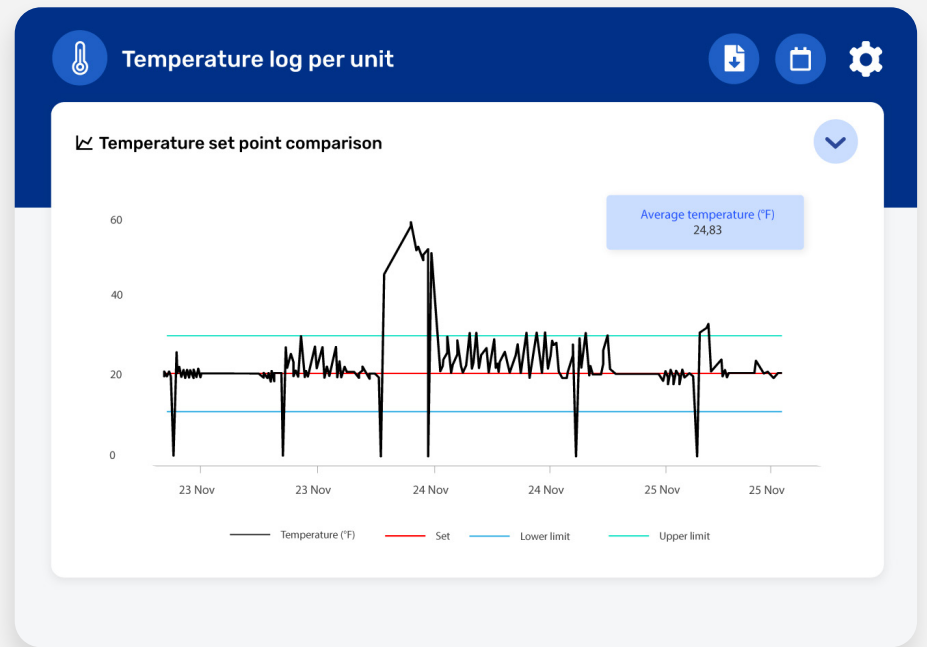
These measures reflect Didcom's commitment to innovation and continuous improvement, setting new standards in fleet management and transport logistics.



## Didcom's innovative technology solutions

The effective implementation of Didcom's cutting-edge technological solutions in Porte® vehicles allowed us to boost our fleet management to a high operational level, empowering our client with the technological and informational resources to guarantee logistical excellence in its business operation.

The optimal use of operational information is the fundamental benefit in the technological implementation of our solutions, providing operational empowerment to our client to help them fulfill their commitment to create global quality connections to companies in the local environment.



## The Benefits

### Results that transcend

The collaboration between Didcom and Porte® has resulted in a number of benefits that not only underline the success of our partnership, but also reflect the added value that Didcom consistently brings to each project – we have achieved results that exceed initial expectations, significantly elevating the efficiency and safety of Porte® operations.

Below are the key areas where we have seen notable improvements:

- + **Proactive actions:** Availability of customized reports with precise information on the operation for taking timely measures.
- + **Operational optimization:** Promotion of more effective resource management and a significant reduction in vehicle downtime

- + **Cost reduction:** Optimization of resources for optimal performance, as well as an improvement in habits and deficiencies that directly influence their consumption.
- + **Improved safety:** Monitoring and operational control on each trip has reinforced protection of the integrity of temperature-sensitive loads, reducing the incidence of losses during transport.
- + **Scalability capacity:** The technologies implemented have facilitated the integration of new solutions at the client's request, which complement and strengthen a single telematics ecosystem.
- + **Customer satisfaction:** Operational management taken to a high-efficiency level allows us to guarantee logistic excellence and the quality of the transported load, reinforcing our client's confidence in the last link in the supply chain.





## Let us create a success story with your project!

Didcom can help you drive logistics excellence in fleet management through the integration of technological solutions that provide tools to empower operations and make proactive decisions, providing an accurate overview of the operation, turning data into a competitive advantage to add value to your business proposal.